



Bill Sizeland  
 Direct Line 848-6764

website:

www.BillSizeland.com

email: SIZELAND@aol.com



RE/MAX®

of Newport

55 Memorial Boulevard
 Newport, RI

(401) 849-0100



S
O
L
D

ENJOY IN-TOWN LIVING - Gracious 5 Bedroom/4 bath Colonial a block from harbor activities. Period details w/ many updates. 1 BR apartment. Fabulous sunsets & harbor views from roof top deck. Parking. \$795,000. www.209Spring.com



PRIVATE HILLSIDE OASIS - 3 Bedroom/ 3 bath home with open floorplan & sweeping waterviews. In-ground pool, wrap around decks & large patio provide great space for entertaining. Great master suite. Sunroom. Finished lower level. Central Air. Deep garage/workshop. Quiet Portsmouth Cul-de-sac. \$680,000. www.37AnneHutchinson.com



NEAR PARKS & HARBOR-Elegant colonial with new addition. You'll love the new kitchen/family room that opens to covered porch & backyard. Nice period details accent this comfortable home. Beautiful hardwood floors, moldings, 2 fireplaces. Magnificent Beech trees & mature landscaping complement easy care yard. \$599,000. www.51HarrisonAve.com



FIFTH WARD-Charming 3 Bedroom/2 Bath cottage with nice period details. Tucked away not far from harbor & activities. Very private backyard & off street parking. New gas heat. Not in flood zone. \$315,000. www.129Connection.com



S
O
L
D

ONE LEVEL CONDO-Well cared for 2 bedroom/2bath unit in quiet & convenient Portsmouth development. Updated kitchen has island counter. Master suite with private deck. Screened Porch, finished basement. \$269,000. www.53Valley.com



COTTAGE CHARM-Nicely renovated 3 bedroom/1.5 bath Cottage with large eat-in kitchen with granite, stainless & glass front cabinet with washer & dryer. Large living, formal dining & office. Off street parking. Convenient location. Qualifies for special interest rates. \$269,000. www.19Newport.com



2 CAR GARAGE/WORKSHOP- Well maintained 3 BR/ 1.5 Bath cottage on quiet side street. Beautiful HW floors. Heated sun porch with French doors. 1st floor laundry. Detached garage could be great studio. \$245,000. www.38Newport.com

EASTON'S POINT LAND-2 Lots are each approved for 3 level homes approximately 2,700 Sq. Ft. with 4 Bedrooms/3.5 baths. Enjoy great views and just short walk to the beach. Public utilities. Call for details. Each lot \$525,000.



P
E
N
D
I
N
G

ROOM TO GROW - Well cared for 4 Bedroom/2 Bath home on quiet dead end street off Harrison Ave. Large living room w/Fireplace, Deck off kitchen. Great guest space w/private entry. 2 car garage-workshop. \$397,500. www.7Sullivan.com



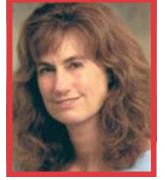
Sean McElroy, ABR
 Broker Associate
848-6751
 email:mcelroy-remax@cox.net



of Newport
 55 Memorial Blvd, Newport, RI
Each RE/MAX is independently owned and operated

Edith Cushing, ABR
 Broker Associate
848-6750
 email:ecushing@cox.net

<http://www.riforsale.com>



KAY/CATHERINE



VIRTUAL TOUR

"ELM TREE COTTAGE" - Gracious 1882 Shingle Style Home by famed Architect Ralph Emerson. The property has 10 bedrooms and features a detailed floor plan with plenty of room for formal and family entertaining. Sits on a landscaped acre of rolling lawn, stone walls and manicured gardens. Marvelous water views of 1st Beach and the pond throughout the home and the grounds. 3 Car Garage. Easy walk to the Beach, Town, Cliff Walk and the Harbor yet plenty of privacy. \$2,000,000

NEWPORT



KAY/ GIBBS AREA - Victorian cottage completely renovated has 4 bedrooms and 3 baths. Features include granite kitchen with gas stove, double ovens, open floor plan living/ dining area with sliders to deck and yard. Perfect for entertaining. All new mechanicals. Covered front porch and plenty of parking. \$445,000

REDUCED



DESIRABLE BELLEVUE AVENUE -"Lindenhurst" One bedroom condominium. Elegant front entry with period detail. A spacious and bright unit features hardwood floors, oversized living room/dining area with built in book shelves, great for entertaining. Beautiful mature trees & grounds. Walk to Shops, Restaurants, Cliff Walk and more. Stately building and solid association. \$295,000.

OFF BELLEVUE



Off Bellevue-Great In Town Commercial Condominium-Current use is two separate offices which are currently rented. Could easily be turned back into one office or an owner occupied office with income. The property is clean, bright and well maintained as well as the building. Corner unit with plenty of parking. Central air. Very central location yet quiet. \$159,900.

MIDDLETOWN



UNIQUE OPPORTUNITY- to run your business from your home. Property has 2 bedroom 1 bath, living room w/fireplace, hardwood floors throughout. Expansion possibilities in the semi-finished 2nd floor. Zoned limited business, explore your possibilities. Large lot. Great Visibility. Central location. \$319,000

PORTSMOUTH



IT'S TIME FOR YOUR DREAM HOME! The property is a buildable double lot which lends to plenty of privacy in a desirable established neighborhood. Approved Architectural Plans for a 3000 sq ft home is included if desired. 3 bedroom ISDS approved septic plan. Wooded lot. Melville School District. \$159,900.